

Controller Installation & User Instructions

CL 3500 Series

SYSTEM REQUIREMENTS

Input power: 5 volts to 24 volts DC | Input current: 10 amperes maximum

GENERAL FUNCTION

The CL 3500 controller provides single button thermal adjustment and control when connected to a TurboFlex flexible heater and the heater's input power (no separate power source is required for this controller).

The controller provides 6 temperature settings that correlate with the 1 to 6 / left to right yellow LED's. The temperature settings are provided by the customer at the time of the order and are pre-programmed by TurboFlex prior to shipment. Pre-programmed temperature setting levels cannot be modified by customers. Contact TurboFlex if temp settings need to be altered. The CL 3500 is for control of heat only (peak temperature threshold).

The controller operates with TurboFlex low profile stick-on sensor 19275 or with bead thermistor 10K ohm 1% (Vishay NTCLE413E2103F520L) available through distribution as an example, or equivalent. Customers are responsible to test and validate temperature results based upon their particular thermal package. Actual results may vary from programmed temp levels.

Operating range: -20F to 250F. Upon power loss, the controller retains its last setting.

INSTALLATION

1. Mount device onto a sturdy surface using side flanges (hardware not included).
2. Connect the flexible heater to the DC OUTPUT contact points on the top of the unit.
3. Connect the sensor to the SENSOR contact points on the bottom of the unit.
4. Connect input power to the DC INPUT contact points on the top of the unit (+/-).

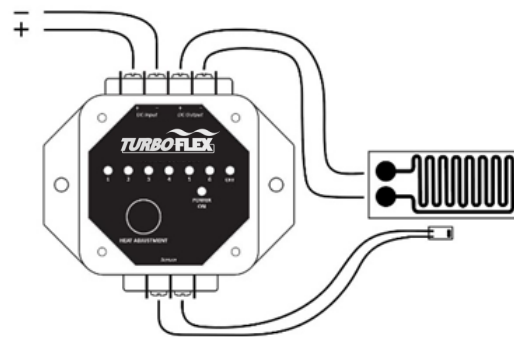
As soon as power is introduced to the unit, the device will present an electronic serial code for 5 seconds. Each of the 7 LEDs will either be ON, OFF, or FLASHING. Note each LED function and record the digital serial code for future reference. The 7 LED serial code represents the temperature setting combination of the temperature settings of the 6 yellow LEDs stored in the controller.

When re-ordering identical units, either provide the same temperature settings or provide the electronic serial code such as LED1 = OFF LED2 = OFF LED3 = Flashing LED4 = OFF LED5 = ON LED6 = Flashing LED7(red) = ON

USER INSTRUCTIONS

Users are to push the single button to advance to the next temp level from #1 to #6 with position #7 being an OFF position. Continuing to push the button cycles the level back to the HIGH position. The green POWER ON LED will light when there is input power to the device regardless of the setting.

The chosen setting will remain in effect if power is disrupted. The selected LED setting will flicker during temperature ramp-up and will stop flickering once the temperature has reached the set point and the device goes into a holding mode. A continuous flashing red LED indicates a loss of the sensor connection. The unit will go into the OFF mode until sensor connection is restored.



WARRANTY & DISCLAIMER

Two-Year Limited Warranty: Purchasers are responsible to determine the fitness of use, the model selection and the application of TurboFlex products. Above claims are general performance guidelines only. TurboFlex's sole responsibility under this warranty, at TurboFlex's option, is limited to replacement or repair, with the purchaser responsible for the cost of shipping for service. No claims will be allowed for direct or indirect damages beyond this product.